

Expt: 9 T.S. of blastula through permanent slide

Identification:

The given slide is identified as T.S of blastula.

Identification Features:

The zygote undergoes a few cycles of mitotic divisions to form a solid ball of cells called morula.

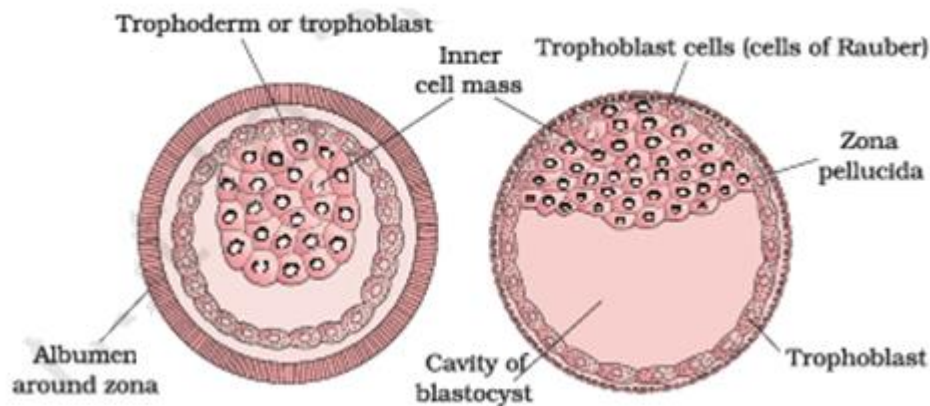
The cells continue to divide and at a later stage a cavity is formed within it. This stage is blastula.

The blastula appears as a sphere with a cavity, called blastocoel within it.

The outer layer of blastomeres are called trophoblasts.

A cellular mass, adhered to the trophoblast is present on one end of the blastula.

It is called inner cell mass.



T.S of blastula